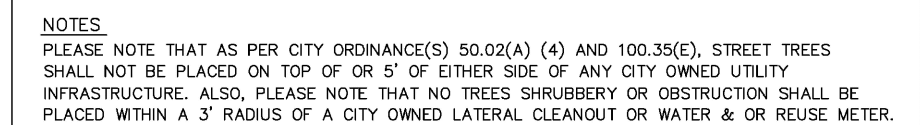
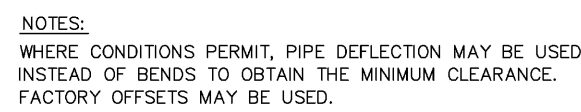


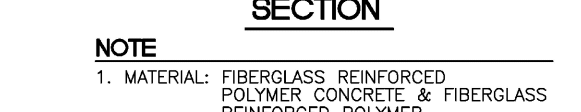
ENGINEERING STANDARDS 2025			
REVISIONS		ENGINEERING DIVISION CITY OF POMPANO BEACH	SEWER PIPE IDENTIFICATION
BY	DATE		
S.S.	01/30/12		
		SCALE: N.T.S.	DATE: JUNE 2022 DWG. NO. 207-1



ENGINEERING STANDARDS 2025			
REVISIONS		TYPICAL SCREEN FOR UTILITIES	
BY	DATE		
TCW	APRIL 2010		
ENGINEERING DIVISION CITY OF POMPAÑO BEACH			
SCALE: N.T.S.			
		APPROVED BY:	DATE: MAY 2022 DWG. NO. 315-1

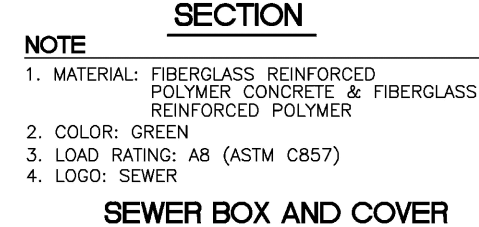
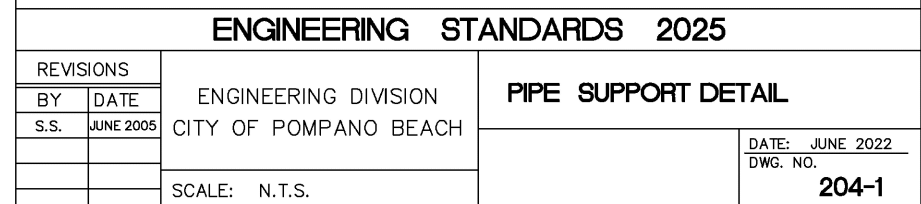


ENGINEERING STANDARDS 2025			
REVISIONS		ENGINEERING DIVISION CITY OF POMPANO BEACH	TYPICAL CONFLICT (SEWER)
BY	DATE		
S.S.	JUNE 2005		
S.S.	02/13/12		
SCALE: N.T.S.		DATE: JUNE 2022 DWG. NO. 206-1	



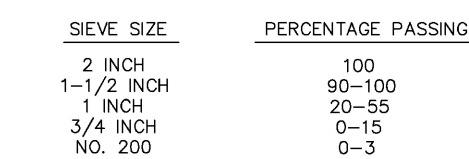
PRODUCT RATING - TRAFFIC						
LOAD DESIGNATION	DESCRIPTION	DESIGN LOADS			TESTING	
		LIVE LB/WHEEL (2)	LIVE + IMPACT LB/WHEEL	SIDE PSF (3)	LOAD, LB	SAFETY FACTOR
AASHTO H15	MEDIUM TRUCK TRAFFIC	12,000	15,600	N/A	27,000 (5)	2.25

REVISIONS		ENGINEERING DIVISION CITY OF POMPANO BEACH	SEWER BOX AND COVER CDR Part No. WB04-1118-12 CDR Part No. WC02-1118-02	
BY	DATE			DATE: JUNE 2022 DWG. NO. 210-2
SCALE: N.T.S.				

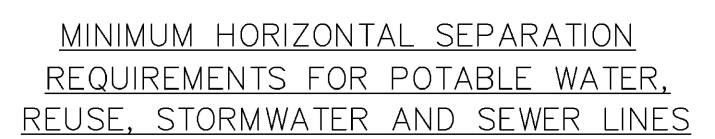


PRODUCT RATING - NON TRAFFIC						
LOAD DESIGNATION	DESCRIPTION	DESIGN LOADS			TESTING	
		LIVE LB/WHEEL (2)	LIVE + IMPACT LB/WHEEL	SIDE POB (3)	LOAD/LBS	SAFETY FACTOR
AASHTO H10	LIGHT TRUCK TRAFFIC	8,000	10,400	N/A	22,568 (4)	2.82

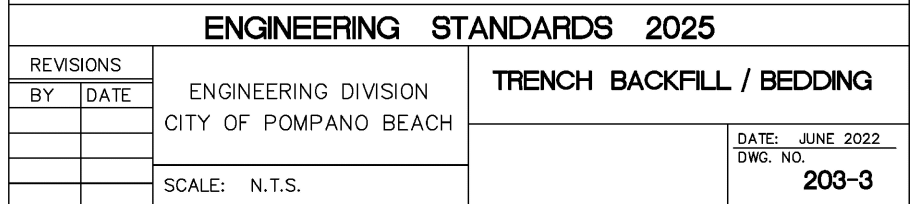
REVISONS		ENGINEERING DIVISION CITY OF POMPANO BEACH	SEWER BOX AND COVER CDR Part No. WB03-118-12 CDR Part No. WC00-118-02	
BY	DATE			DATE: JUNE 2022 DWG. NO. 210-1
SCALE: N.T.S.				



ENGINEERING STANDARDS 2025			
REVISIONS		ENGINEERING DIVISION CITY OF POMPANO BEACH	TRENCH BACKFILL / BEDDING
BY	DATE		
SCALE: N.T.S.		DATE: JUNE 2022 DWC. NO.	203-4



ENGINEERING STANDARDS 2025			
REVISIONS		ENGINEERING DIVISION CITY OF POMPAÑO BEACH	MIN. HORIZONTAL SEPARATION FOR SANITARY SEWER
BY	DATE		
S.S.	01/30/12		
SCALE: N.T.S.		DATE: JUNE 2022 DWG. NO. 209-1	



1. ALL NONMETALLIC PIPE SHALL BE INSTALLED WITH 12 THIN SOLID COPPER TRACING WIRE.
2. THE MARKER BALLS MUST BE INSTALLED DIRECTLY ABOVE THE PIPE.
3. MARKER BALLS SHALL BE INSTALLED AT 40' O.C.
4. BALL COLOR CODING:
SANITARY SEWER SYSTEM: GREEN

ENGINEERING STANDARDS 2025			
REVISIONS		ENGINEERING DIVISION CITY OF POMPAÑO BEACH	UTILITY PIPE AND MARKER BALLS LOCATION
BY	DATE		
S.S.	01/30/22		
SCALE: N.T.S.		DATE: JUNE 2022 DWG. NO. 208-1	



NOTES:
PLEASE NOTE THAT AS PER CITY ORDINANCE(S) 50.02(A) (4) AND 100.35(E), STREET TREES SHALL NOT BE PLACED ON TOP OF OR 5' OF EITHER SIDE OF ANY CITY OWNED UTILITY INFRASTRUCTURE. ALSO, PLEASE NOTE THAT NO TREES SHRUBBERY OR OBSTRUCTION SHALL BE PLACED WITHIN A 3' RADIUS OF A CITY OWNED LATERAL CLEANOUT OR WATER & OR REUSE METER

REVISIONS		ENGINEERING DIVISION CITY OF POMPANO BEACH	REQUIRED TREE LOCATIONS	
BY	DATE		APPROVED BY:	DATE: MAY 2022
				DWG. NO.
SCALE: N.T.S.				316-1

